

# Solution Brief

## PLANVIEW ENTERPRISE FOR AGILE

### Support for Agile in the Industry-Leading Portfolio Management Platform

Planview Enterprise®, the flagship portfolio management platform from Planview, supports both traditional waterfall project processes and the iterative Agile methodology.

Both approaches have their merits. The waterfall method, linear and sequential, enforces discipline and can reduce the risk of schedule slips, among other things. Agile, too, has its benefits. More flexible and modular, it is ideal for teams who must deliver a product to market while being responsive to the changing voice of the customer.

Many organizations leverage both approaches. This is why Planview Enterprise, which has always supported the waterfall methodology, now includes integration points for Agile. Now, your portfolio management solution of choice can support your choice of development methods.

#### A Collaborative Methodology

Agile encourages collaboration, so Planview Enterprise provides the ability to create separate user roles with supporting software features for all participants:

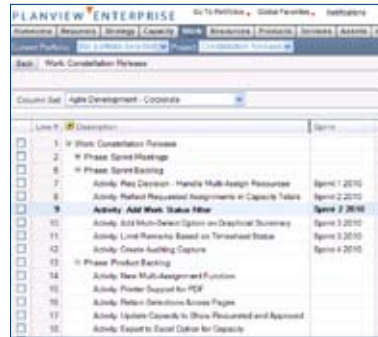
- **Product Owners** – document the product vision, develop user stories, and prioritize features
- **Customers** – provide input during sprint demos that can be captured as new user stories for product backlog prioritization
- **SCRUM Masters and Development Managers** – populate sprint backlog from product backlog, create sub-tasks for stories, update story points based on sprint planning, and add developers to stories
- **Developers** – make testing notes against stories or sub-tasks and report effort for costing purposes
- **Resource Managers** – optimize resource utilization across multiple projects or products and ensure resource availability on critical initiatives

Planview Enterprise also provides rich capabilities in the area of project communities. Each project has a community page that includes project documentation, multi-threaded discussions, a message board for project team updates, polling functions, and project analytics in support of velocity and burndown charts. This community functionality can be supported directly within the Planview Enterprise application or can be integrated with Microsoft® SharePoint®.

To further enable collaboration, Planview Enterprise supports an integration to Atlassian® JIRA® (an issue tracking system with an Agile plug-in), via the Planview OpenSuite™ interoperability product line. This enables product managers and developers to use their preferred system of record while still communicating effectively to ensure efficiency and productivity.

#### Adapt to Change

One of the keys to Agile planning is the ability to easily modify plans in order to adapt to change. The Web-based interface of Planview Enterprise – Enterprise Portfolio Management allows product owners and SCRUM masters to quickly populate sprints with user stories from the product backlog using a simple cut-and-paste function. Additionally, developers may assign themselves as resources to stories, make testing notes directly against the story for viewing and editing by all team members, and can also track actual effort expended against a story via the Planview Enterprise timesheet for project costing purposes.



*Planview Enterprise offers support for and integration points into the Agile methodology*

#### Planview Enterprise for Agile

The Planview Enterprise® for Agile lets you leverage the Agile development methodology with Agile integration points and support built into Planview Enterprise.

Much like the mission of Planview, the Agile approach focuses on delivery, constant customer feedback, and transparent communication. Planview Enterprise gives users the ability to see Agile and traditional waterfall projects in the same context. Now, your portfolio management solution of choice can support your development approach of choice.

Learn more at [planview.com/Agile](http://planview.com/Agile).

#### Planview Enterprise for Agile helps you:

- Improve customer satisfaction by continuously infusing the voice of the customer throughout the development process
- More effectively manage customer and market-driven changes, resulting in higher quality products
- Plan a product backlog and always have visibility into business priority across teams
- Through Planview OpenSuite, leverage tools that their development teams already use for Agile, such as JIRA

## PLAN AND EXECUTE FLEXIBLY

Sprints may be planned for whatever duration is determined by each Agile team. User stories can be provided by application or product owners and sub-tasks can include those from developers, testers, and documentation team members to ensure that working software can be delivered on a frequent basis.

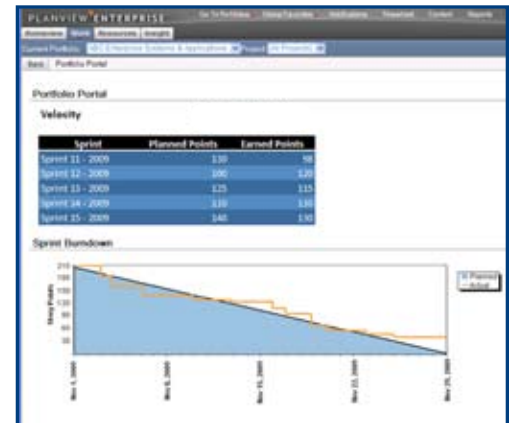
And with the flexible project and resource management features in Planview Enterprise, resources can be assigned by function – Requirements, Reserves, Allocations, and Authorizations – to accurately block off resource availability for iterations and release planning.

## TRACK PROJECTS EASILY

Key Agile information elements to enable your teams to track Agile projects – such as Planned and Earned Story Points, Story Status, Team, Story Number, Sprint Number, and Sprint Start and Finish Dates – are all part of a standard set of columns available out of the box in Planview Enterprise, allowing users to get started with minimal configuration. Users can document additional details about each story during sprint planning, including potential unit tests to support test-driven development, to ensure accurate assignment of story points or ideal days. Additionally, content management functions can store notes from sprint retrospectives.

## REPORT SUCCESS

Finally, the custom reporting dashboards in Planview Enterprise and its OLAP-based reporting solution, Insight Analytics, delivers Agile-oriented reporting functions you need to communicate the project plan, progress against the plan (including velocity metrics and burndown charts), and end-of-iteration reports.



*Planview Enterprise for Agile delivers the metrics you need to track and report on progress*

**Planview Enterprise for Agile** gives users the ability to see Agile and more traditional Waterfall projects in the same context. Whether new to Agile or established users of the methodology, whether using Agile enterprise-wide or in only in certain circumstances, Planview supports your needs.

Learn more today at [www.planview.com/Agile](http://www.planview.com/Agile).



For 20 years, Planview has been advancing the discipline of portfolio management, helping our customers change the way they manage people and money to make better business decisions. With a singular focus on portfolio management, Planview is the only company that combines customer-driven software, unmatched domain expertise, and proven best practices to solve each customer's unique business problems. For more information, visit [www.planview.com](http://www.planview.com).

© 2011 Planview, Inc. All rights reserved. All trademarks acknowledged.