

Product Datasheet

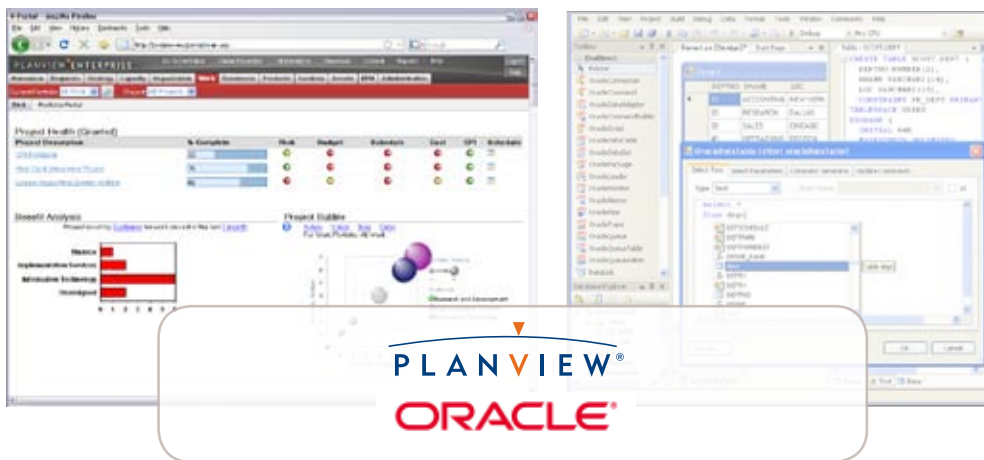
PLANVIEW OPENSUITE FOR ORACLE

Integrate Planview Enterprise with Oracle Enterprise Resource Planning

Enterprise Resource Planning (ERP) provides critical business insight into areas such as finance, human capital management, operations and corporate services, automating and streamlining processes while reducing costs and improving productivity. One of the leaders in this area is undoubtedly Oracle.

But while Oracle offers a comprehensive solution to ERP challenges, the hundreds of legacy information resources still in production in most companies will make reaching these data formats difficult, costly and time-consuming. Planview solves this problem with adapters that eliminate the complexity of low-level interface coding while reducing costs, time, and risk.

Planview has dedicated the past 20 years refining and perfecting a powerful yet easy-to-use portfolio management solution, Planview Enterprise®. The Planview approach also includes Planview OpenSuite™, a product line that enables interoperability with business systems such as Oracle, enabling Planview Enterprise to leverage existing data from Oracle to ease implementation and setup time, and ensure consistency and accuracy of data between systems. Planview adapters access, transform, and create composite services from disparate sources and provide universal accessibility for the Oracle BPEL Process Manager and the entire Oracle business integration suite.



For example, financial data in Oracle can be automatically shared with the IT and product development departments, making it easy for project and product managers to keep projects on budget with easy access to labor and non-labor costs, be they capitalized or expensed. And Oracle HR data can be automatically imported to Planview Enterprise, eliminating the need to re-input the same personnel information. No longer is sharing data between these disparate systems difficult, time consuming, or error-prone. Further, the flexibility of OpenSuite enables you to integrate your Oracle data with Planview in batch or real-time modes.

Typical Planview OpenSuite for Oracle integration points include:

- Resources from Oracle HR data into Planview Enterprise
- Timecard actuals from Planview Enterprise into Oracle financials
- Financial costing from Oracle into Planview Enterprise financial planning

Planview OpenSuite

Planview® OpenSuite™ delivers out-of-the-box interoperability between the portfolio management benefits of Planview Enterprise® and the technology solutions you rely on every day. Now, you can easily share data in disparate systems to make the most informed decisions, while enabling those systems to do what they do best – manage IT service delivery, control the product development lifecycle, ease collaboration and productivity, and more – without dedicating scarce technical resources to the often arduous task of integration.

Learn more at www.planview.com/OpenSuite.

Key Benefits of Planview Opensuite for Oracle:

- Accelerates Oracle integration projects
- Maximizes your investment in legacy systems
- Provides reusable composite data services
- Reduces costs and project risks by eliminating custom-coded adapters

Key Features of Planview Opensuite for Oracle:

- Drag-and-drop development studio
- Bi-directional, real-time connectivity
- Synchronous and asynchronous support
- Multithreading for high performance

Planview OpenSuite for Oracle Features

Composite Data Services

Planview composite data services offer developers using Oracle Business Integration the coarse granularity to build reusable components based on Web Services standards. Composite data services effectively bridge the gap between disparate, raw data sources and the requirements of SOA principles, as developers move away from brittle integration middleware.

Open-Standards Connectivity with Wide Platform Compatibility

Planview adapters leverage the capabilities of the Oracle Application Server to provide an end-to-end J2EE compliant design that truly gains the advantages of open- and standards-based architectures. Planview adapters support J2EE by providing the comprehensive data and application connectivity needed to bind Web Services and applications together without sacrificing reliability, scalability, or portability.

Comprehensive Connectivity

Planview data adapters for Oracle Application Server enable rapid access to heterogeneous data. A comprehensive set of over 200 adapters allows a broad range of seamless connectivity to file systems, databases, message buses, EDI networks, Web-enabled applications, business applications, and industry-standard protocols on numerous platforms. Also included is the unique capability of Planview to process non-relational and semi-structured content that is buried throughout most companies.

Easy to Configure and Deploy

The no-coding development studio has schema, mapping, and transformation designers that simplify the complex representation of data and rules. A comprehensive library and pre-built transformation functions is included, as well as support for custom transformations based on unique data manipulation requirements. All of the adapter configuration information is stored in a metadata repository with versioning and check-in/check-out capabilities.

Get started today!

Learn how you can get the benefits of Planview OpenSuite at www.planview.com/Opensuite.

Specifications

Production

- Linux
- HP – UX
- Solaris
- AIX
- Windows
- OS/390 & Z/OS
- 3.1H – 4.7

Design Environments

- Windows XP
- Windows 2000



For 20 years, Planview has been advancing the discipline of portfolio management, helping our customers change the way they manage people and money to make better business decisions. With a singular focus on portfolio management, Planview is the only company that combines customer-driven software, unmatched domain expertise, and proven best practices to solve each customer's unique business problems. For more information, visit www.planview.com.

© 2011 Planview, Inc. All rights reserved. All trademarks acknowledged.