

# Product Datasheet

## PLANVIEW OPENSUITE FOR SIEMENS TEAMCENTER PLM

### Integrate Planview Enterprise with Siemens PLM Software's Teamcenter

Siemens® is a leading global provider of Product Lifecycle Management (PLM) software and services. Siemens Teamcenter® PLM software brings together portfolio management, project management, and the product lifecycle to enable your company to fully leverage valuable resources for the greatest impact and prioritize products to align with and drive forward your strategic business objectives. Planview®, a recognized leader in the product portfolio management market, provides integration between its product portfolio and project management capabilities and Teamcenter PLM software.

### Out-of-the-Box Connectivity

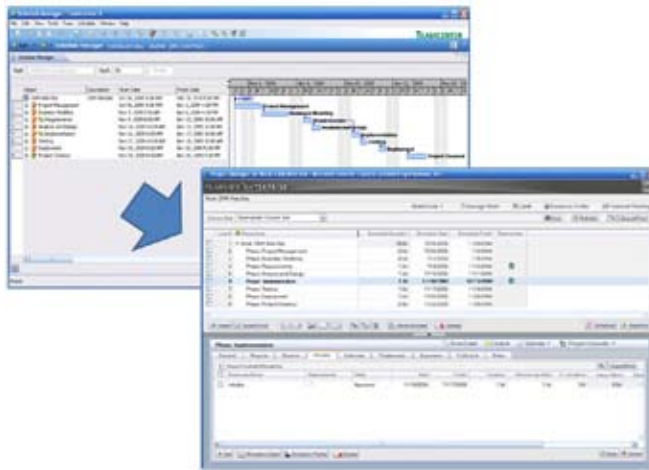
Planview OpenSuite™ for Siemens Teamcenter PLM leverages the advanced technology of the Planview OpenSuite Interoperability Platform, which delivers out-of-the-box connectivity between Planview Enterprise and 200+ enterprise applications and enables custom integrations with in-house developed systems. The platform accelerates integrations and cuts risk, cost, and complexity from the integration process.

### A Complete View

Planview OpenSuite for Siemens Teamcenter PLM ties together the top-down portfolio and capacity planning and portfolio and investment analysis of Planview Enterprise with the bottom-up planning, project, and program execution of Teamcenter.

This integration facilitates capacity management and forecasting through the synchronization of resources by pulling them from Teamcenter into Planview Enterprise. It gives product teams visibility into product requirements at all points in the development process.

The Planview OpenSuite integration with Teamcenter provides portfolio analysis on schedules that currently reside in Teamcenter. Project schedule data in Siemens Teamcenter is sent to Planview Enterprise along with resource assignments.



*Resources are pulled from Teamcenter into Planview Enterprise*

#### Key Integration Points:

- For analysis and approval:  
Load project schedule from Teamcenter to Planview Enterprise
- For capacity planning:  
Load resource and skill data from Teamcenter to Planview Enterprise

### Planview OpenSuite

Planview® OpenSuite™ delivers out-of-the-box interoperability between the portfolio management benefits of Planview Enterprise® and the technology solutions you rely on every day. Now, you can easily share data in disparate systems to make the most informed decisions, while enabling those systems to do what they do best – manage IT service delivery, control the product development lifecycle, ease collaboration and productivity, and more – without dedicating scarce technical resources to the often arduous task of integration.

Learn more at [www.planview.com/OpenSuite](http://www.planview.com/OpenSuite).



### Planview OpenSuite for Siemens Teamcenter PLM enables you to:

- Optimize the product portfolio by using best-in-class strategic planning to map product initiatives against revenue targets and innovation strategies
- Link bottom-up program and project execution with strategic product portfolio decisions
- Plan capacity and manage resources to ensure meeting time-to-market requirements
- Evaluate the business impact of market trends, competitive pressures, and other change drivers to make the best decisions on product portfolios and projects

## Project Schedule Load

Planview Enterprise pulls schedules and resource assignments from Teamcenter and creates a project in Planview Enterprise for the parent level and subordinate children. This facilitates top-down strategic portfolio planning and allocation and tracking of time, people, money, and project status to help you meet product release dates and revenue targets.

## Resource Synchronisation

Resource and skill information is loaded from Teamcenter into Planview Enterprise to help project administrators perform capacity planning and investment analysis. You gain the ability to compare organizational capacity with the product roadmap, calculate the total cost of development from ideation through product end of life, and manage resources to consistently meet product launch dates.

The integration between Planview Enterprise and Siemens Teamcenter PLM helps you gain new, unparalleled insight into every stage of the product lifecycle, make better decisions, and ensure that you are investing in the right products. Having these capabilities makes it possible to optimize your product portfolios to achieve the greatest market impact and to meet your strategic business objectives.

To learn more, visit [www.planview.com/Opensuite](http://www.planview.com/Opensuite) today.



For 20 years, Planview has been advancing the discipline of portfolio management, helping our customers change the way they manage people and money to make better business decisions. With a singular focus on portfolio management, Planview is the only company that combines customer-driven software, unmatched domain expertise, and proven best practices to solve each customer's unique business problems. For more information, visit [www.planview.com](http://www.planview.com).

© 2011 Planview, Inc. All rights reserved. All trademarks acknowledged.